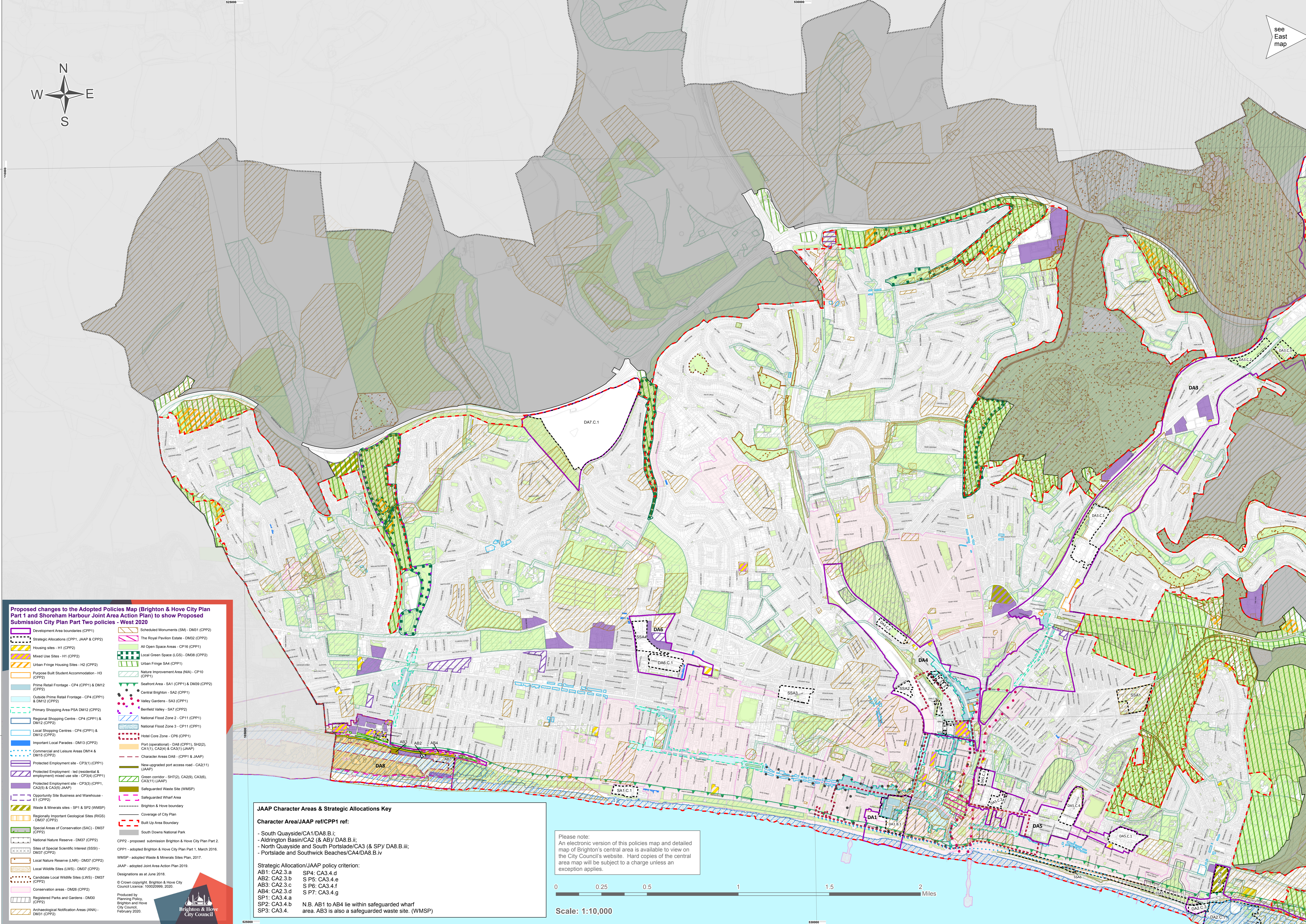




see East map



**Proposed changes to the Adopted Policies Map (Brighton & Hove City Plan Part 1 and Shoreham Harbour Joint Area Action Plan) to show Proposed Submission City Plan Part Two policies - West 2020**

Development Area boundaries (CPP1)	Scheduled Monuments (SM) - DM31 (CPP2)
Strategic Allocations (CPP1, JAAP & CPP2)	The Royal Pavilion Estate - DM32 (CPP2)
Housing sites - H1 (CPP2)	All Open Space Areas - CP16 (CPP1)
Mixed Use Sites - H1 (CPP2)	Local Green Space (LGS) - DM38 (CPP2)
Urban Fringe Housing Sites - H2 (CPP2)	Urban Fringe SA4 (CPP1)
Purpose Built Student Accommodation - H3 (CPP2)	Nature Improvement Area (NIA) - CP10 (CPP1)
Prime Retail Frontage - CP4 (CPP1) & DM12 (CPP2)	Seafront Area - SA1 (CPP1) & DM39 (CPP2)
Outside Prime Retail Frontage - CP4 (CPP1) & DM12 (CPP2)	Central Brighton - SA2 (CPP1)
Primary Shopping Area PSA DM12 (CPP2)	Valley Gardens - SA3 (CPP1)
Regional Shopping Centre - CP4 (CPP1) & DM12 (CPP2)	Benfield Valley - SA7 (CPP2)
Local Shopping Centres - CP4 (CPP1) & DM12 (CPP2)	National Flood Zone 2 - CP11 (CPP1)
Important Local Parades - DM13 (CPP2)	National Flood Zone 3 - CP11 (CPP1)
Commercial and Leisure Areas DM14 & DM15 (CPP2)	Hotel Core Zone - CP6 (CPP1)
Protected Employment site - CP3(1) (CPP1)	Port (operational) - DA8 (CP1), SH2(2), CA1(1), CA2(4) & CA3(1) (JAAP)
Protected Employment - led (residential & employment) mixed use site - CP3(4) (CPP1)	Character Areas DA8 - (CPP1 & JAAP)
Protected Employment site - CP3(3) (CPP1, CA2(5) & CA3(5) (JAAP))	New upgraded port access road - CA2(1) (JAAP)
Opportunity Site Business and Warehouse - E1 (CPP2)	Green corridor - SH7(2), CA2(8), CA3(6), CA3(1) (JAAP)
Waste & Minerals sites - SP1 & SP2 (W MSP)	Safeguarded Waste Site (W MSP)
Regionally Important Geological Sites (RIGS) - DM37 (CPP2)	Safeguarded Wharf Area
Special Areas of Conservation (SAC) - DM37 (CPP2)	Brighton & Hove boundary
National Nature Reserve - DM37 (CPP2)	Coverage of City Plan
Sites of Special Scientific Interest (SSSI) - DM37 (CPP2)	Built Up Area Boundary
Local Nature Reserve (LNR) - DM37 (CPP2)	South Downs National Park
Local Wildlife Sites (LWS) - DM37 (CPP2)	
Candidate Local Wildlife Sites (LWS) - DM37 (CPP2)	
Conservation areas - DM26 (CPP2)	
Registered Parks and Gardens - DM30 (CPP2)	
Archaeological Notification Areas (ANA) - DM31 (CPP2)	

CPP2 - proposed submission Brighton & Hove City Plan Part 2.  
 CPP1 - adopted Brighton & Hove City Plan Part 1, March 2016.  
 W MSP - adopted Waste & Minerals Sites Plan, 2017.  
 JAAP - adopted Joint Area Action Plan 2019.  
 Designations as at June 2018.  
 © Crown copyright, Brighton & Hove City Council. Licence: 100020999, 2020.  
 Produced by Planning Policy, Brighton and Hove City Council, February 2020.

**JAAP Character Areas & Strategic Allocations Key**

**Character Area/JAAP ref/CPP1 ref:**

- South Quayside/CA1/DA8.B.i;
- Aldrington Basin/CA2 (& AB)/DA8.B.ii;
- North Quayside and South Portside/CA3 (& SP)/DA8.B.iii;
- Portside and Southwick Beaches/CA4/DA8.B.iv

**Strategic Allocation/JAAP policy criterion:**

AB1: CA2.3.a	SP4: CA3.4.d
AB2: CA2.3.b	SP5: CA3.4.e
AB3: CA2.3.c	SP6: CA3.4.f
AB4: CA2.3.d	SP7: CA3.4.g
SP1: CA3.4.a	
SP2: CA3.4.b	
SP3: CA3.4.c	

N.B. AB1 to AB4 lie within safeguarded wharf area. AB3 is also a safeguarded waste site. (W MSP)

Please note:  
An electronic version of this policies map and detailed map of Brighton's central area is available to view on the City Council's website. Hard copies of the central area map will be subject to a charge unless an exception applies.

